







An adult bladder can hold up to **400ml** of liquid, which is the equivalent of a large glass of water.



Kidneys filter our blood to remove waste. They take the waste products to our **bladder** where they are **weed out**. The kidneys also return **vitamins, amino acids, glucose, and hormones** into the body.

Other ORGAN FACTS

The **biggest** organ in the human body is our **skin!**

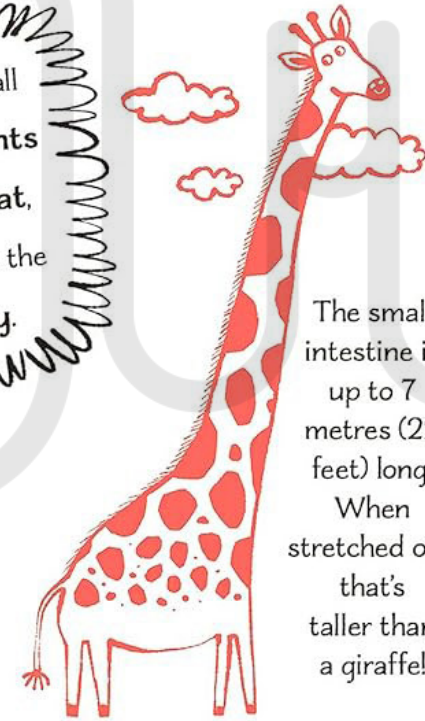
The **appendix**, unlike most other organs, **doesn't have a function** in the human body.

Some **organs** are called **hollow organs**.

This means that they are **empty** in the **middle**. These include the **stomach, intestine, and bladder**.

The **intestines** get all the necessary **nutrients** from the food we eat, which they provide to the **rest of our body**.

The **liver** can regenerate. This means it can partially repair itself.



The small intestine is up to **7 metres (22 feet)** long. When stretched out, that's taller than a giraffe!

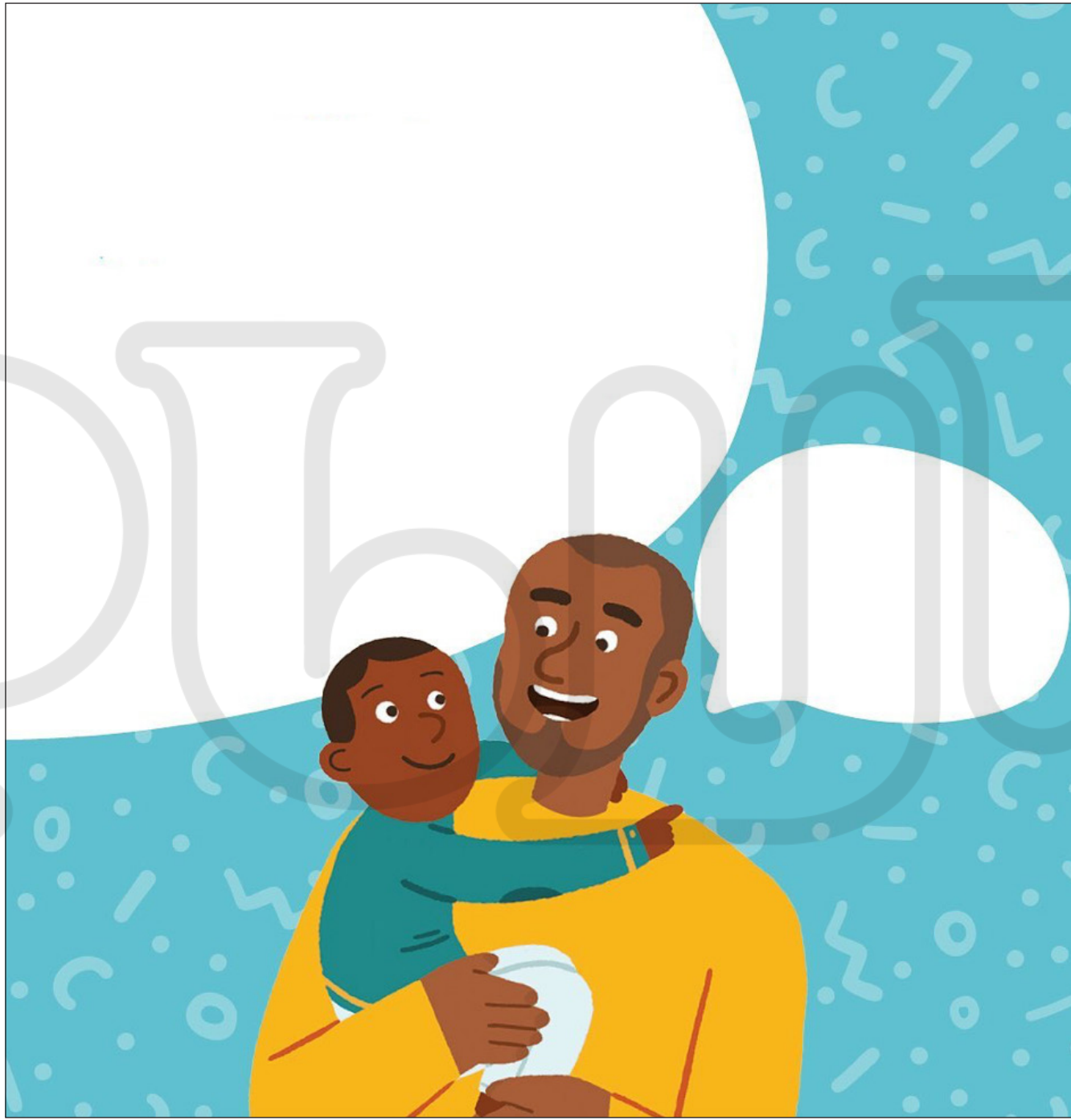


Illustration of a man and a child holding a white egg, with large, faint, stylized letters 'D', 'I', 'D', 'O', 'M' overlaid in the background.